

liteCUE-basic

Simple and cost-effective control solution for any meeting room



HUDDLE ROOMS



MEETING ROOMS



CLASSROOMS



BOARDROOMS

INTEGRATION

- Easy equipment integration
- No other remote controls required
- Intuitive control by press of the button
- Integration with touchONE reservation system

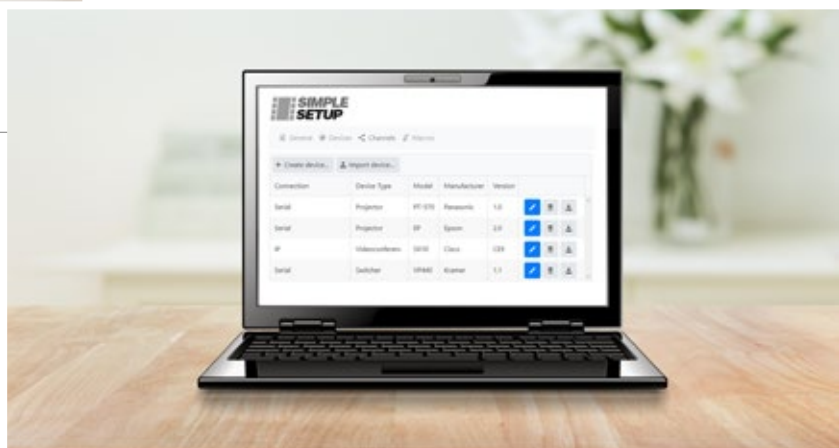


INSTALLATION

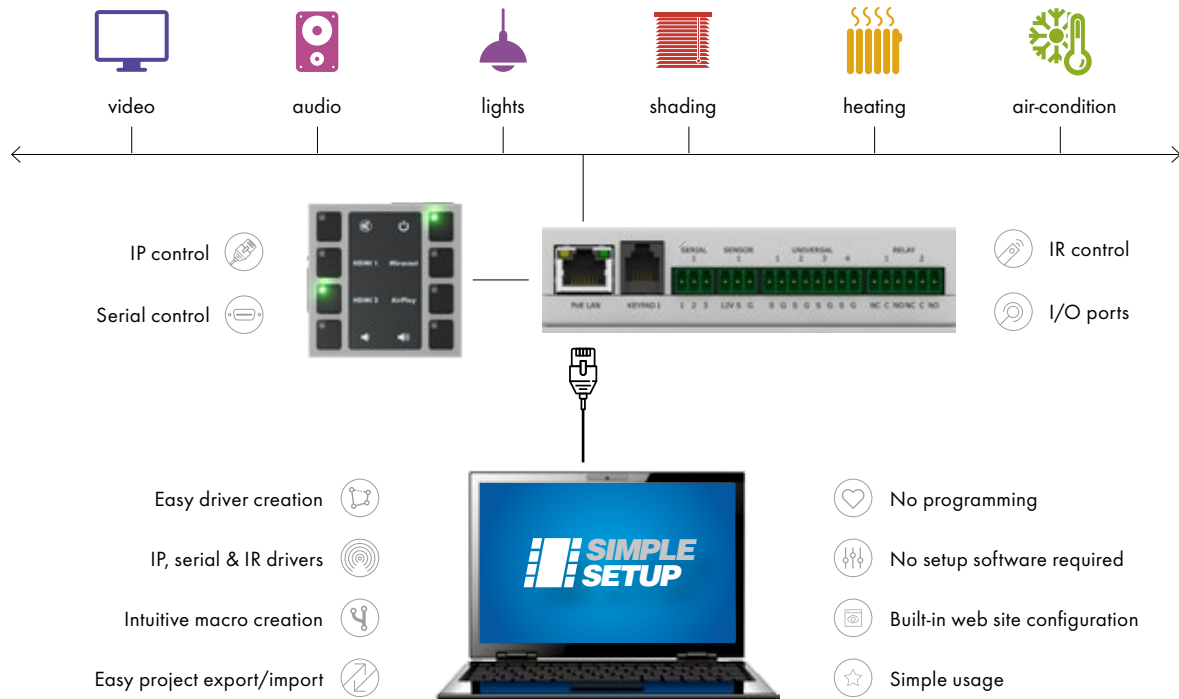
- Small dimensions
- Quick installation using Ethernet and PoE
- Keypad wall-mount or tabletop installation
- Compatible with many interconnection boxes

SIMPLE SETUP

- Friendly configuration using built-in web site
 - No software and programming required
 - Powerful support for IP device control
 - Various control ports available



BASIC CONTROL SOLUTION



SPECIFICATIONS



liteCUE-basic

Product code	CS0588
Description	Cost-effective control system with keypad Perfect for small sized applications
Control panel	8-button keypad, programmable green LED in each button User-defined button label, white backlight with variable brightness Single cable connection for power and data communication Powered from controller Enclosure 55 x 55 mm fits to many standard interconnection boxes Color white aluminium RAL9006 Various keypad mounting accessories available
Controller	Wired 10/100 BaseT Ethernet, 802.1X authentication mechanism and Proxy server support Powerful support for IP device control 1x bi-directional serial port RS-232/485 1x keypad port - power supply output 12 VDC, RS-485 data communication 1x sensor port - power supply output 12 VDC, digital input 4x universal port - each can be used as digital I/O, serial RS-232 output or IR output 2x low-voltage relay 24 V / 0.5 A Power supply PoE, IEEE 802.3af / Class 0 Aluminum enclosure, dimensions 120 x 30 x 80 mm
Configuration / programming	Built-in friendly web site for small projects Cue Visual Composer programming tool for complex projects
Weight	0.3 kg
Included accessories	Keypad cable, Connector set, Ethernet cable